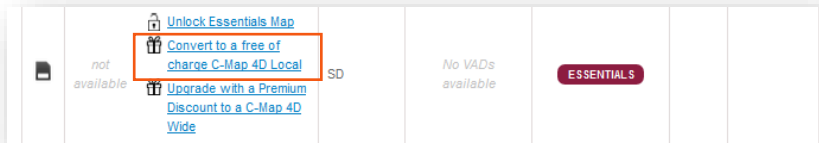


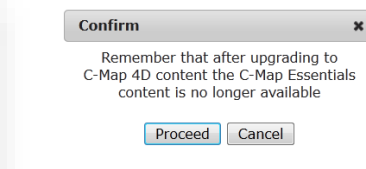
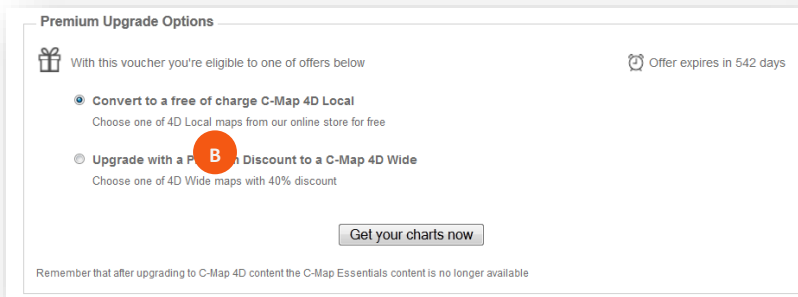
CONVERT C-MAP ESSENTIALS CARD TO A FREE 4D LOCAL COVERAGE AREA

1. After registering the C-MAP ESSENTIALS card, go to YOUR MAPS and select **CONVERT TO A FREE 4D LOCAL** chart.

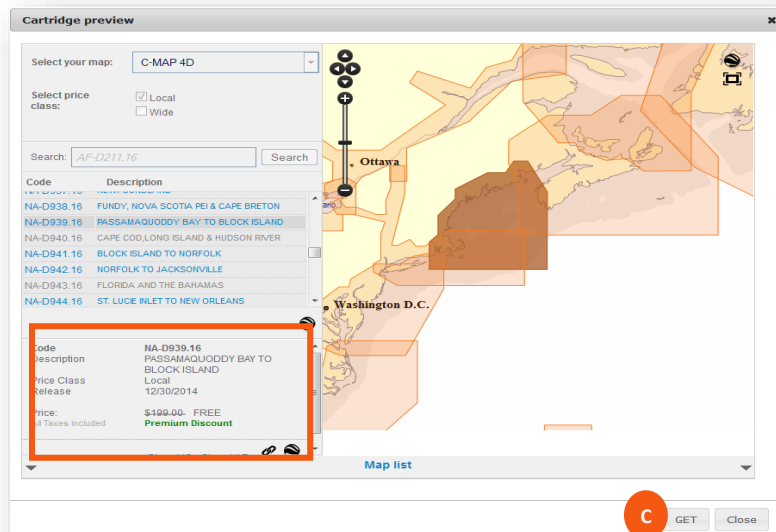


2. Under 'Premium Upgrade Options' choose **CONVERT** then click on **GET YOUR CHARTS NOW (A)**.

*Note: Upgrading to a C-MAP 4D LOCAL coverage area will overwrite the Essentials data. Click **PROCEED (B)** to launch the cartridge preview map or **CANCEL** to choose another option.*



3. Using the **CARTRIDGE PREVIEW** map, locate the desired chart coverage area then choose **GET (C)**. *Note: Only select **GET (C)** once you are sure of the coverage area. The selected chart cannot be changed and all **ESSENTIALS** chart data will be overwritten. The price listed will include the premium discount as **FREE**.*



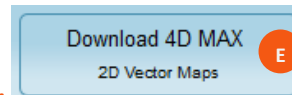
Maps Manager will launch showing the selected chart **ON THE CLOUD**.

For Raymarine MFDs choose from **(D)**:

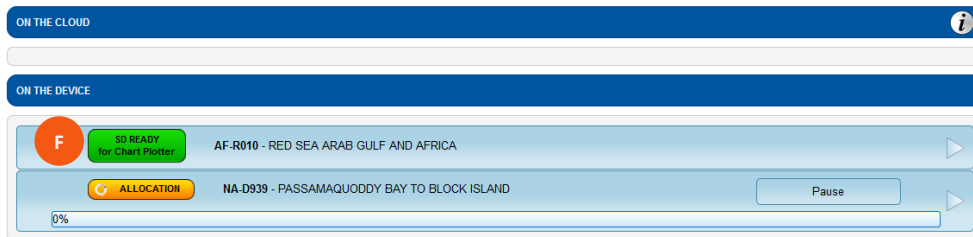


- **DOWNLOAD 4D MAX** – data contains only 2D vector maps.
- **DOWNLOAD 4D MAX+** - data contains 2D & 3D vector, Dynamic Raster & Satellite maps.

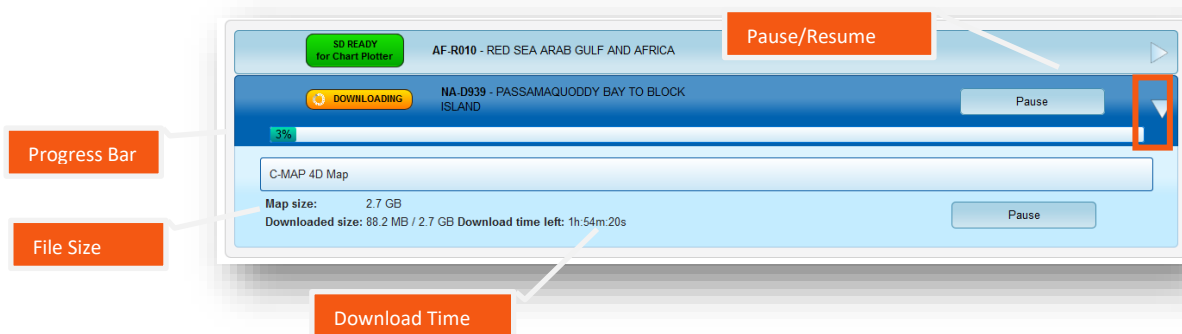
For Raymarine Dragonfly select **DOWNLOAD 4D MAX (E)**.



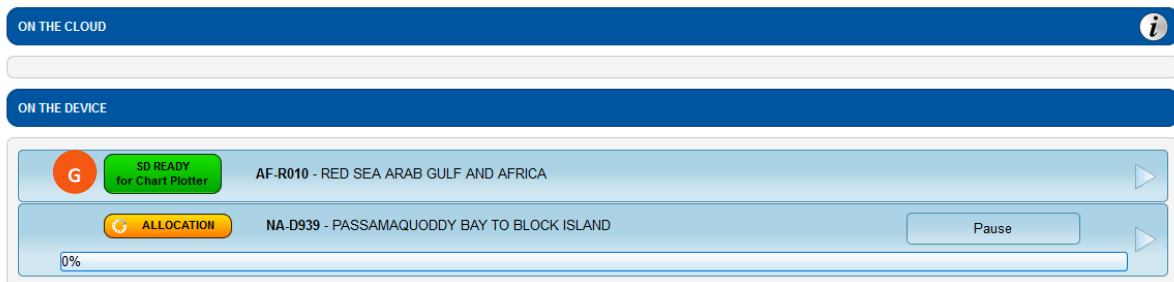
4. After selecting download, the chart will move to **ON THE DEVICE (F)** - starting the process of overwriting the ESSENTIALS data. *Note: both the Essentials chart title and the LOCAL chart will appear ON THE DEVICE until the programming process is complete.*



The progress bar will show download percentage completed. The download can be **PAUSED** and **RESUMED** at anytime. Click on the **arrow** to view additional download details including file size and remaining download time.



- Once the download is completed, the C-MAP 4D chart will show as **READY FOR CHART PLOTTER (G)** under ON THE DEVICE. The SD card can now be inserted in to the Raymarine chartplotter. *Note: The C-MAP Essentials chart data will no longer be shown under ON THE DEVICE.*



Contact us

Country	Phone	E-Mail
Italy, Spain, Portugal, France, Croatia, Turkey, Holland, Belgium, Greece, UK & Ireland, Germany, Austria, Switzerland, Sweden, Finland, Africa & Middle East and other European countries not listed below.	+39 0585 794 800	EU-customersupport@c-map.com
Norway, Denmark, Iceland, Greenland	+47 51 46 47 99	
Poland	+48 58 765 40 90	
Asia and Australia	+ 61 2 9420 3800	apac-customersupport@c-map.com
The Americas and Caribbean	Toll free: +1 800.424.2627	US-customersupport@c-map.com

LOWRANCE

SIMRAD

B&G

MAP